



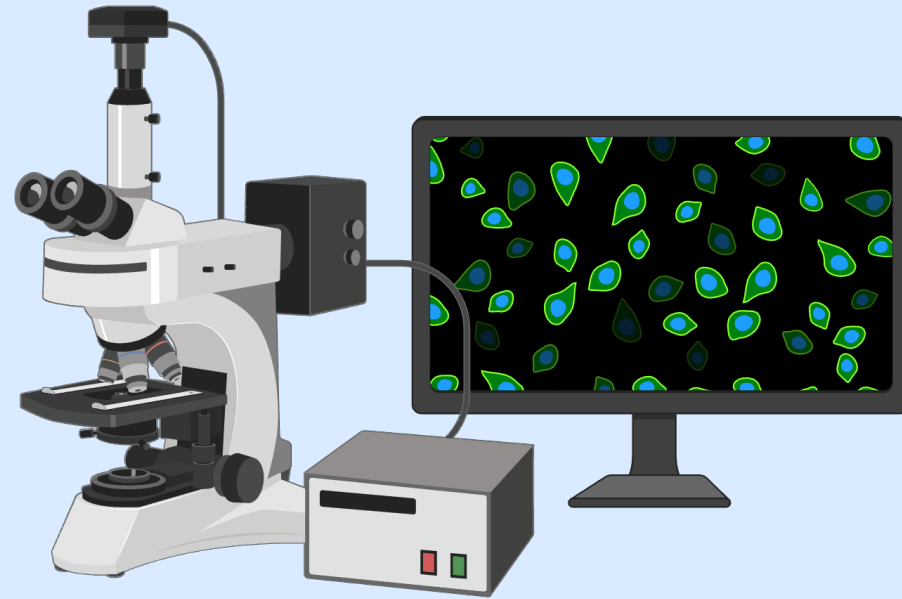
Ibraheem Ali, PhD

iali@mednet.ucla.edu



Clifford Kravit

ckravit@mednet.ucla.edu



# Research Technology and Data Management Support

UCLA Health IT, DGIT Research Informatics  
Sep 2023, Research Administration Forum



# Overview

---

Data Management Strategy and Planning

Safe Data Sharing

Identifying Storage and Compute Resources

Consultations and Referrals

# Data Management Strategy and Planning



[NIH 2023 Data Management & Sharing Requirements](#)



File Management & Naming Conventions



[Identifying Data Security Requirements](#)



[Budgeting for Data Management & Curation](#)

# Identifying Storage and Compute Resources

- Depends on data type & collaboration requirements
- [Use Health Box](#) for storing files, syncing to cloud and collaborating (HIPAA compliant)
- Leverage cloud storage or compute using [Amazon Web Services](#) (HIPAA compliant)
- [Network shares available](#) to 2 Terabytes of storage per lab
- Hoffman2 Compute Cluster Storage



# Safe Data Sharing and Management

● **Identify storage options for protected health data**

● **Identify deidentification options, and repositories for sharing protected data**

● **Consultation will likely be required to collect information on specific use cases**

# Consultations and Referrals



Consult with your [business relationship manager](#) for more information on services

Chat with us (contact info on first slide)