



Extramural Fund Management

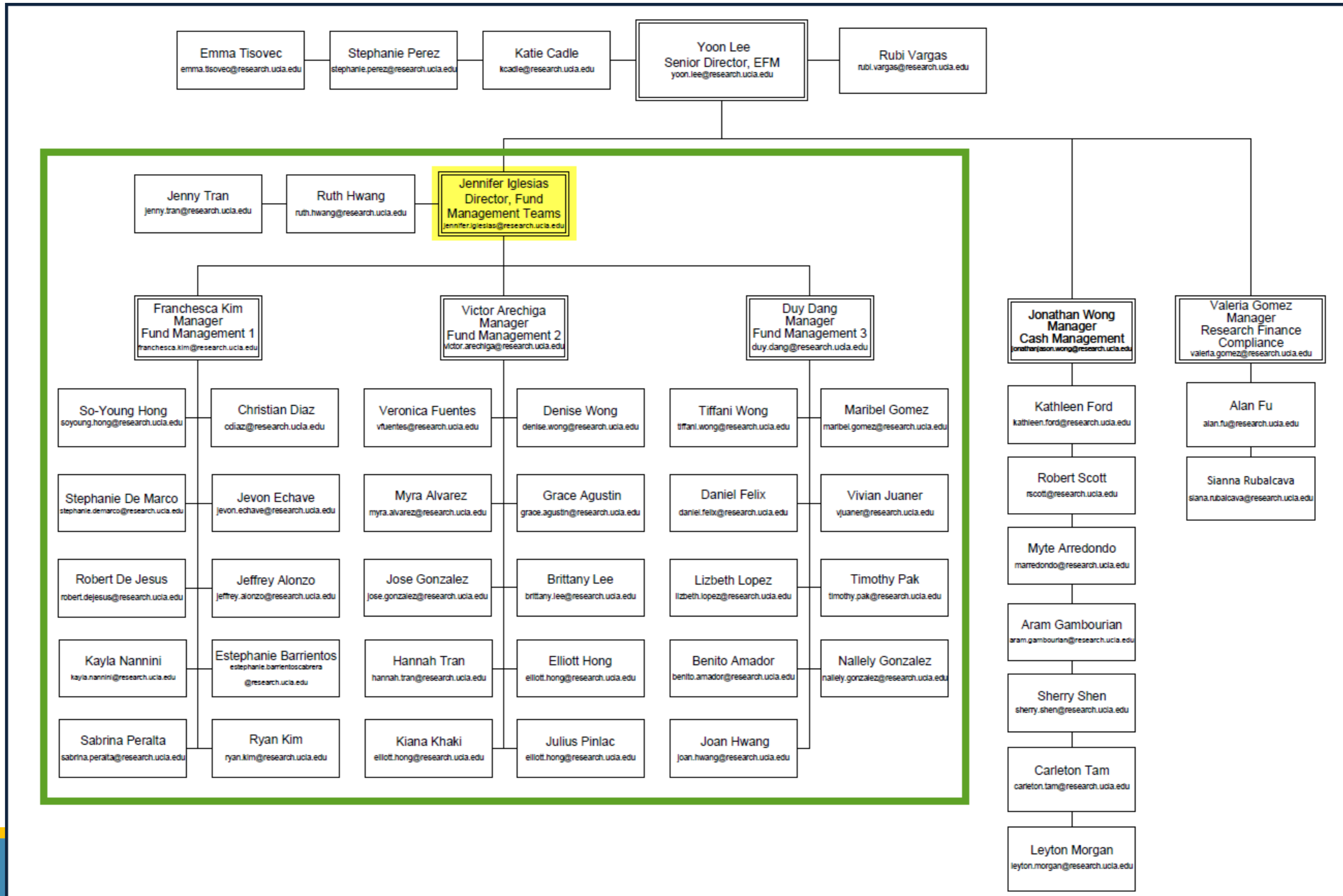
April 13, 2023

Agenda

- **Staff Update**
- **Ascend 2.0: PPM Subledger and POETAF**
- **Effort Reporting**

Congratulations!

- Jennifer Iglesias is Director of Fund Management Teams in EFM, effective April 1st.



Ascend 2.0

Katie Cadle

Agenda

- **Ascend 2.0**
 - PPM Subledger
 - FAU to POETAF and CoA
 - Project and Source
 - Expenditure Types

PPM Subledger

General Ledger and Subledgers in Oracle

- In **current state**, the **General Ledger (GL)** is the central repository for **detailed financial transactions**
- In the **future state** (Oracle), most transactions will **begin in subledgers** which will **contain subledger-specific information**:

Project Portfolio Management (PPM) Subledger

- All sponsored contract and grant costs will begin in the Project Portfolio Management (PPM) subledger
- In PPM, detailed individual transactions will be recorded using POETAF



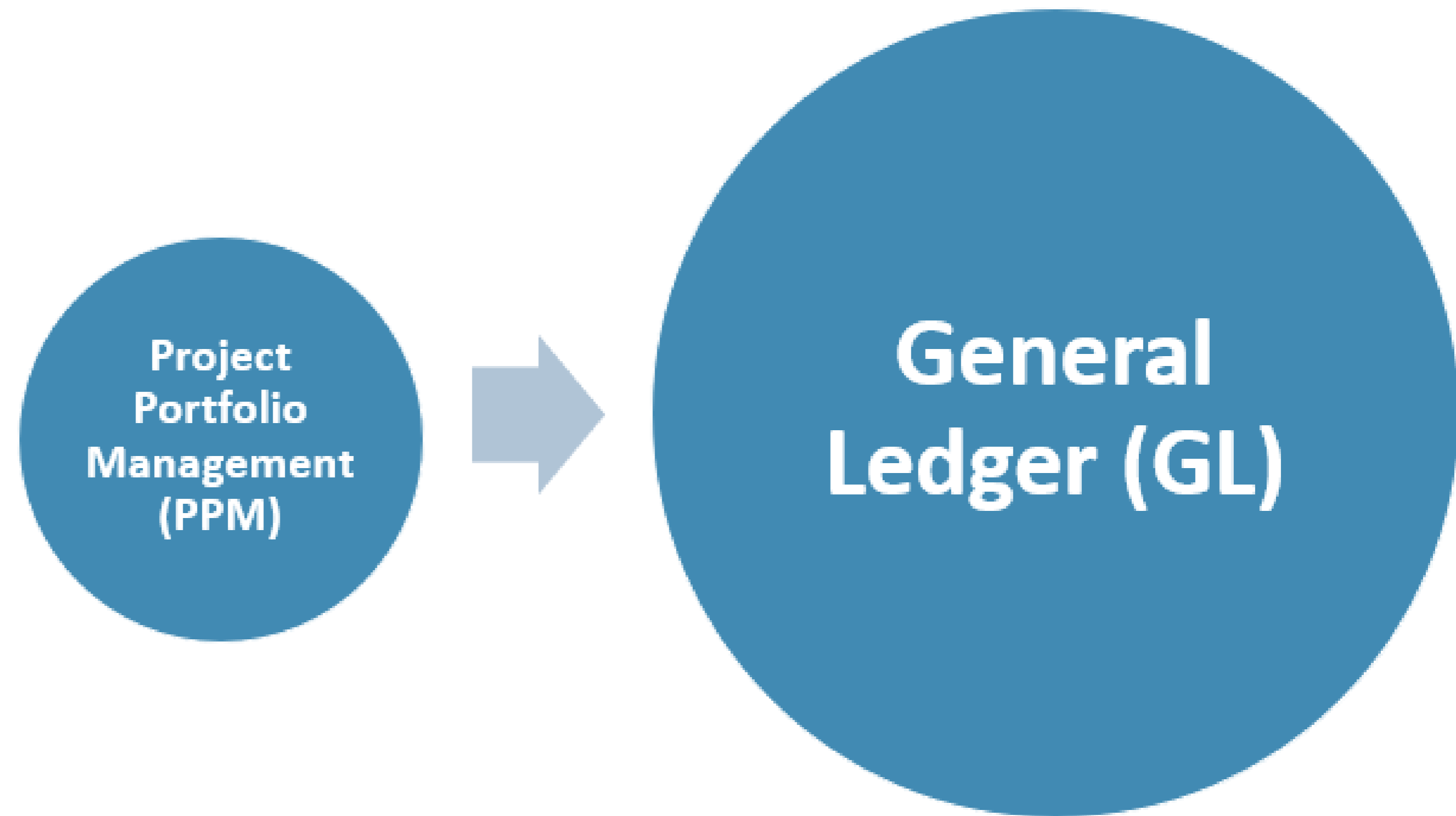
All costs in subledgers will be recorded to the General Ledger based on Subledger Accounting Rules (SLA)

General Ledger (GL)

- In the General Ledger, summary level information will be recorded using the Chart of Accounts (CoA) chart string
- General Ledger will remain “General”

PPM Subledger

PPM Features



- **PPM is more than a module to store costs! The PPM Subledger:**
 - Interfaces Awards and Projects from PATS
 - Houses expense approval workflow
 - Serves as the source of Financial Reporting and Invoicing to Sponsors
 - Facilitates setup of AR for Invoicing
 - Provides the location to run custom reports for PPM data

FAU to POETAF and CoA Mapping

The diagram below outlines how each segment of the POETAF will be determined.

PPM

Project Number	Organization	Expenditure Type	Task	Award	Funding Source
A unique combination of Account, Cost Center, and Fund values in FAU will have one unique project. Project Number (8 digits) will be assigned in a sequential order by system.	Organization value is derived from Financial Unit values that have been confirmed through CoA mapping.	Expenditure Type value is derived from Object Code value in FAU .	Task has one to one relationship with Project. Task value is derived from Project Number value . No connection to any segment in FAU.	Award is set up in PPM for each unique sponsored award. Award value is derived from Fund Number in FAU and award information in PATS . For single fund number, one fund in FAU will be one award in PPM.	Funding Source values indicate if it is from sponsor, UCLA (cost sharing), Program income, or other source (e.g., STIP). Funding source values will be derived by Fund Group codes and account numbers in FS except for cost sharing. Separate effort will be planned to gather the cost sharing data.

 Campus is involved in mapping

 Program team will derive values from FAU values and related attributes

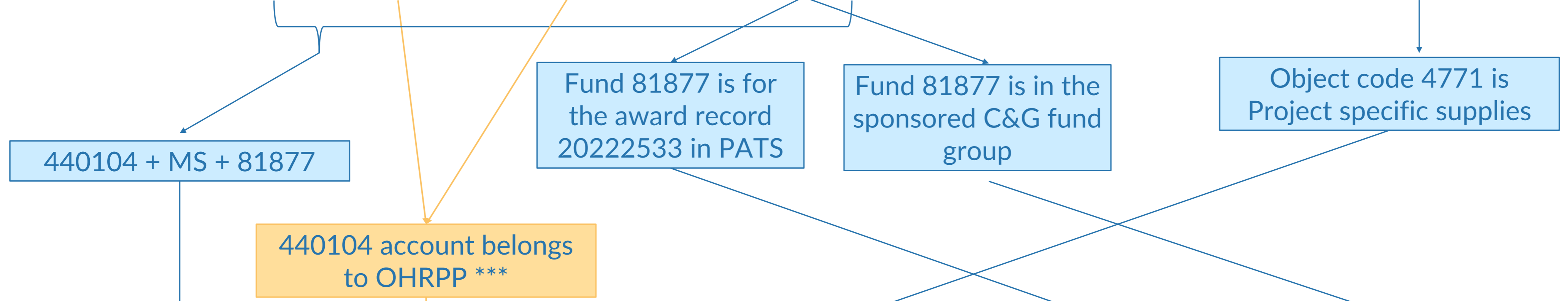
Note: Approach to POETAF mapping is still being finalized and is subject to change.

FAU to POETAF and CoA Mapping

FAU

Example: FAU to POETAF

Location	Account	CC	Fund	Project	Sub	Object	Source
4	440104	MS	81877		03	4771	



POETAF

Project Number	Organization	Expenditure Type	Task	Award	Funding Source
A0000053	OHRPP	Office supplies for direct use for the project	A0000053	20222533	External sponsor

***A combination of Financial unit and Entity from CoA mapping will be used for Organization

Note: (1) Approach to POETAF mapping is still being finalized and is subject to change.
 (2) Expenses in the future will map to the appropriate expense account.

FAU to POETAF and CoA Mapping

FAU

Example: POETAF to CoA

Location	Account	CC	Fund	Project	Sub	Object	Source
4	440104	MS	81877		03	4771	

POETAF

Project Number	Organization	Expenditure Type	Task	Award	Funding Source
A0000053	OHRPP	Supplies - for Project	A0000053	20222533	External sponsor

CoA

Entity	Financial Unit	Account	Fund	Transaction Class ***	Program	Portfolio	Flex	Activity	Inter-company
UCLA Campus	OHRPP	Expenses - Supplies	C&G Funds	Research ***		A0000053	N/A	N/A	

- Campus is involved in mapping
- Program team will derive values from FAU/POETAF values

*** Transaction Class:
Account 440104 in FAU means research

Note: Approach to POETAF mapping is still being finalized and is subject to change.

Project and Source


Mapping

FAU	Location	Account	Cost Center	Fund	Sub	Object	Project	Source
------------	----------	---------	-------------	------	-----	--------	----------------	---------------

Currently, in FAU “**Project**” and “**Source**” are available for **departmental discretionary use as user-entered text fields**



POETAF (PPM)	Project	Organization	Expenditure Type	Task	Award	Funding Source
---------------------	---------	--------------	------------------	------	-------	----------------

 In POETAF, **user-entered text fields for discretionary use are unavailable**, as Oracle does not offer this functionality

Project and Source

Our Approach

Lack of user-entered text fields for discretionary use in Oracle will be a **significant change**. The Grants Team is working through the steps outlined below to **develop business solutions** where possible; however, there will be cases in which **some** of the information you are currently tracking using the FAU cannot be tracked using POETAF.

Completed Steps

- Gather business scenarios** from Departments and EFM (**46** business scenarios received!)
- Assign Grants Team resources** from UCLA and Deloitte

In Progress

- Review each case to identify solutions** for data originating in current financial system and data originating in Oracle (projected completion by 6/2/23)

Next Steps

- Review solutions at Research Advisory Committee (RAC)** for feedback (5/25/23)
- Communicate solutions** to campus at **future RAF** (summer 2023)

Expenditure Types | Feedback Requested

The Grants Team has reviewed all Object Codes used in the past three fiscal years and is working to eliminate underused Object Codes, combine Object Codes where possible, and add more descriptive detail with the aim of streamlining the list of Expenditure Types in POETAF. (The total number of Object Codes in the current FS that can be used on C&G is around 840.)

Please share your input!

The Grants team is seeking departmental feedback on a proposed list of 189 Expenditure Types by May 15, 2023.

- Do you see any expenditure type that is too general or not clear to use?
- Do you have specific expenditure type to add to the list?
- Any other suggestions?

The list will be shared via the ORA News mailing list after this meeting.

	A
1	Expenditure Types:
2	Administrative Services for Project - Recharge
3	Advertising for Project
4	Alteration and Renovation for Project
5	Animal Laboratory Services - External
6	Animal Laboratory Services - Recharge
7	Banking & Investment Manager Fees for Project
8	Blood and Blood Products
9	Blood Donor Credit
10	Books, Collections for Library for Project
11	Cleaning Supplies for Project
12	Composite Benefit Rate
13	Computer Software Rental Fee
14	Computer Supplies & Hardware
15	Computers and Network Infrastructure
16	Conference Fee
17	Consultant Services
18	Current Assets - Inventory - Other
19	Current Assets - Inventory - Resale
20	Database Services
21	Demurrage
22	DOE Laboratories Expense - Other - LBNL
23	Electricity for Project
24	Emergency Childcare

Effort Reporting

Val Gomez

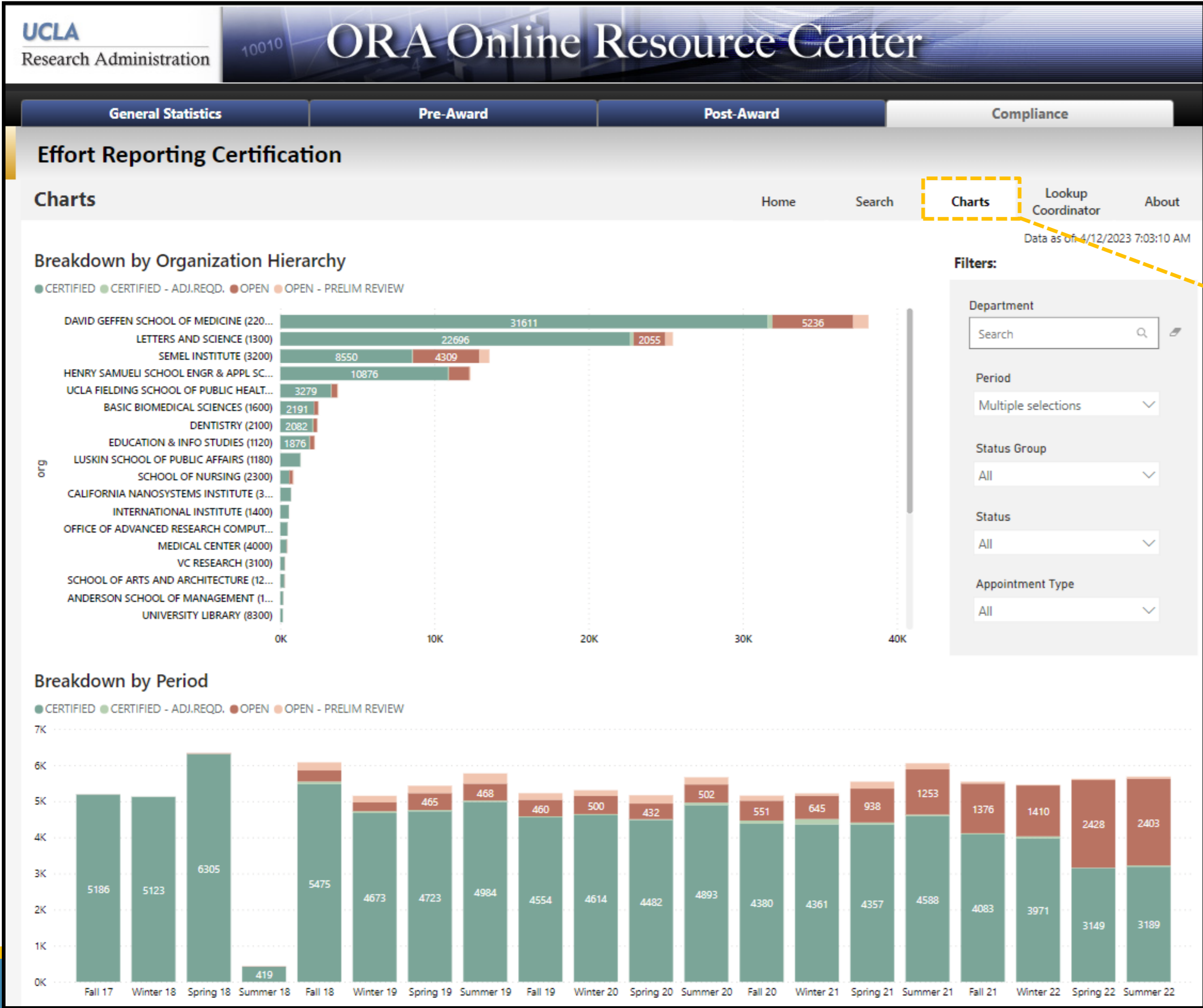
Effort Report Certification Status

Academic Year	Fall			Winter			Spring			Summer		
	Cert. %	Certified	Open	Cert. %	Certified	Open	Cert. %	Certified	Open	Cert. %	Certified	Open
2021-2022	74%	4,115	1,428	73%	4,030	1,430	56%	3,160	2,463	56%	3,223	2,460
2020-2021	86%	4,467	689	86%	4,509	709	79%	4,413	1,130	76%	4,631	1,421
2019-2020	87%	4,583	641	87%	4,646	660	87%	4,505	662	87%	4,964	700
2018-2019	91%	5,547	531	91%	4,726	425	87%	4,760	670	86%	5,021	751
2017-2018	99%	5,186	4	99%	5,124	2	99%	6,316	18	96%	420	13
2016-2017	99%	5,126	1	99%	5,180	3	99%	5,267	4	99%	5,795	5
2015-2016	99%	5,224	3	99%	5,266	1	99%	5,390	2	99%	5,702	2
2014-2015	100%	5,267	0	99%	5,343	1	99%	5,346	2	99%	5,862	2
2013-2014	99%	5,372	1	100%	5,337	0	100%	5,502	0	100%	5,898	0
2012-2013	100%	5,777	0	99%	5,844	1	100%	5,814	0	99%	6,119	1
2011-2012	100%	6,212	0	100%	6,286	0	100%	6,277	0	100%	6,609	0
2010-2011	100%	6,576	0	100%	6,621	0	100%	6,774	0	100%	7,082	0
2009-2010	100%	6,433	0	100%	6,680	0	100%	6,899	0	100%	7,798	0
2008-2009	100%	5,832	0	100%	5,879	0	100%	6,129	0	100%	7,393	0
2007-2008	100%	5,828	0	100%	5,873	0	100%	5,997	0	100%	6,499	0
2006-2007	100%	6,111	0	100%	6,049	0	100%	6,196	0	100%	6,575	0
2005-2006							100%	6,682	0	100%	6,983	0

- Effort Report Certification Rates can be found in [ORA Online Resource Center](#)
 - Compliance Tab → Effort Report Certification Status
- As of 4/12/23, there are **18,836** open effort reports to be reviewed for certification
 - A higher number of effort reports starting Fall 2018 requires certification
- ERS Helpdesk to work with ERS Coordinators to address growing population of open effort reports
 - Identify and addressing obstacles impeding certification

Effort Report Certification Status

Breakdown by Organizational Hierarchy



Filtered Effort Report Certification Rates Are Accessed Through the Charts Tab

- Department, Period, Status

Upcoming Release

- Effort reports will be released for the following periods:

Reporting period	Non-Academics and 11/12 Academics	9/12 Academics
Fall 2022	October 2022 – December 2022	July 2022 – October 2022
Winter 2023	January 2023 – March 2023	November 2022 – February 2023

- **Target Release:** Late April 2023
- **Certification Due Date for Fall 22 & Winter 23 Release:** July 2023
- **ERS production site will not be available during release preparation**
 - Tentative downtime is scheduled starting Friday, 4/21/23 from 5pm – Monday, 4/24/23
 - ERS downtime will be communicated through the ERS Listserv
- **ERS will account for earnings through March 2023**
 - Subsequent loads of earnings are targeted to take place monthly
- **Effort reports impacted by key UCPATH defects will continue to be flagged as “Under preliminary Review” with an associated comment.**
 - Please visit [EFM’s special instructions page](#), to view an example of “Under Preliminary Review” flag, along with explanation of known UCPATH issues and the necessary actions to take to complete certification.

Upcoming LMS Courses Hosted by EFM

- **Post Award Research Administration:** Online course is covered in two half-day sessions
 - Monday, May 1st and Tuesday, May 2nd from 8:30am - Noon
- **RAPID Closeout Tool:** Online course is covered in one half-day sessions
 - Monday, May 8th from 8:30am - Noon
- **Effort Reporting:** Online course is covered in two half-day sessions
 - Monday, May 15th and Tuesday, May 16th from 8:30am - Noon
- You may register via the UCLA Learning Management System (LMS) at <http://lms.ucla.edu>. If you have any questions about this course, feel free to e-mail EFMOperations@research.ucla.edu.
- Please share this information with others in your department who may be interested.

Any Questions?

Contact Information

EFM Website

<https://efm.research.ucla.edu/>

Ascend Website

<https://ascend.ucla.edu/>

Katie Cadle

Phone: (310) 794-0223

Email: kcadle@research.ucla.edu

ERS Help Desk

Email: ershhelp@research.ucla.edu

Val Gomez

Phone: (310) 794-0103

Email: valeria.gomez@research.ucla.edu

