



# Grant Updates

---

February 11, 2021

# Federal Updates

## Uniform Guidance (2 CFR 200)

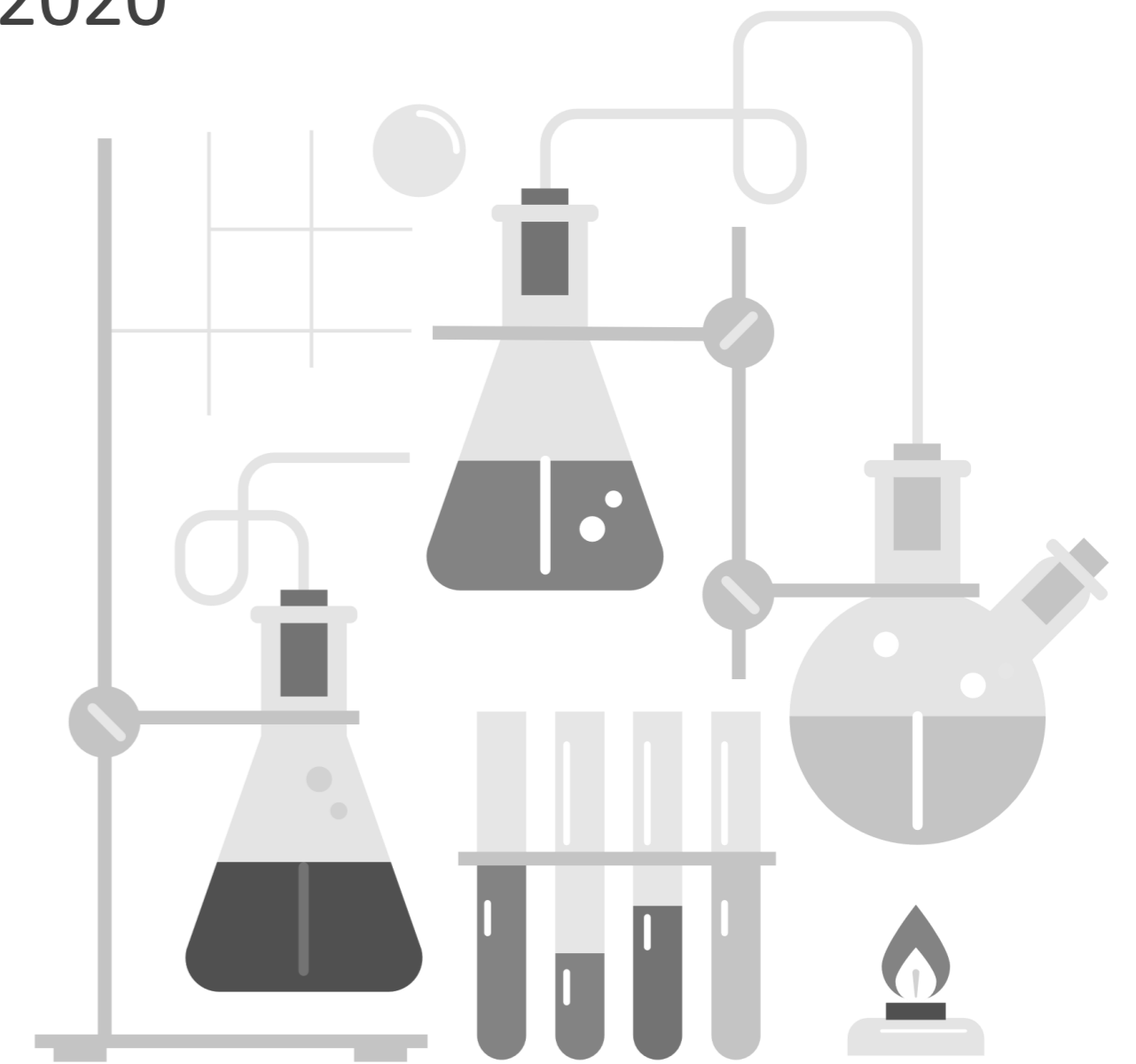
- Updated August 2020
- Updated November 2020

## Pending updated Grants Policy Statements from Federal Sponsors

- NASA Grant & Cooperative Agreement Manual (GCAM) – revised November 12, 2020
- NSF – pending
- NIH – pending

## Research Terms and Conditions Matrix

- Updated November 12, 2020
  - DHS – GFAD & DHS – FEMA added Sponsors
  - NASA will require prior approval for new Subawards



# NIH

## NIH Budget

- NIH Budget for FY2021 increased 3% above FY2020 to \$42.93 billion
  - NIH Budget for FY2020 increased 6.65% to \$41.68 billion
  - NIH Institutes received at least 1.5% increase to each Institute & Center
    - \$404 million from the *21st Century Cures Act*
    - Cancer Research, Brain Initiative, All of Us Precision Medicine Initiative, Common Fund, Type 1 – Diabetes Program (\$150 m)
    - Prioritization for meritorious Early Stage Investigators (ESI)

[Information on Early Stage Investigators](#)

## NIH Salary Cap

- **NOT-OD-21-057** NIH Salary Cap based upon Executive Level II
  - Effective 1/3/2021
  - Executive Level II raised from \$197,300 to \$199,300
  - [NIH Salary Cap Summary](#)

# NIH- NRSA

## NOT-OD-21-049

### NRSA Stipend Levels FY2021

Career Level	Years of Experience	Stipend for FY 2020
Predoc	All	25,320

Postdoctoral	0	\$53,760
	1	\$54,144
	2	\$54,540
	3	\$56,712
	4	\$58,608
	5	\$60,780
	6	\$63,036
	7 or More	\$65,292



### Tuition & Fees

- 60% of actual tuition up to \$16,000
- or if dual degree, 60% of actual tuition up to \$21,000

### Training Related Expenses (Institutional Training Grants)

- Predoc: \$4,200
- Postdoc: \$11,850

### Institutional Allowance (Individual Fellows)

- Predoc: \$4,200
- Postdoc: \$11,850

# NIH

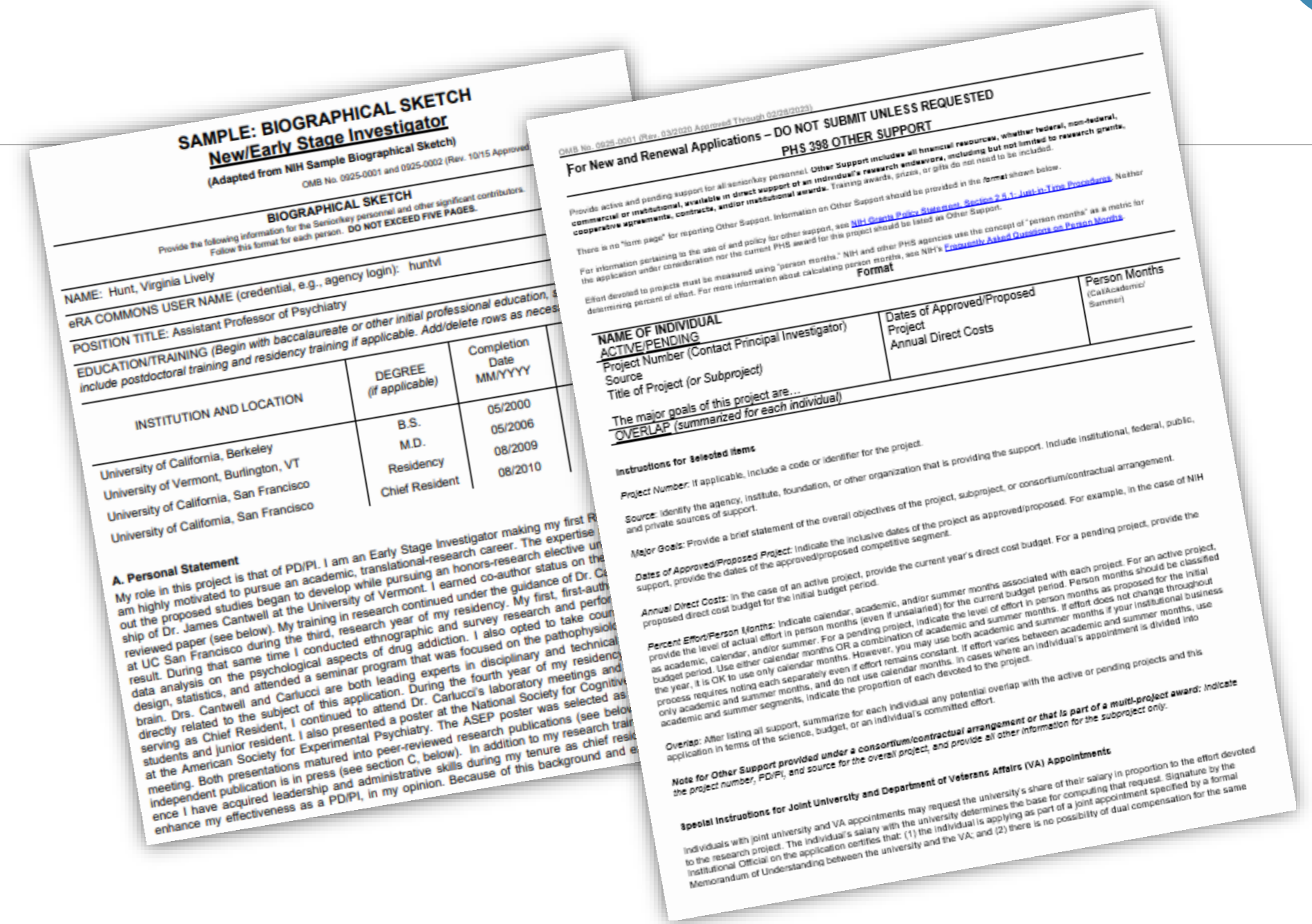
## NIH Biographical Sketch & Other Support

- ~Spring 2021 updated forms and guidance to be provided

### REMINDERS:

### Hyperlinks (urls)

- Can only be used if FOA specifically allows the inclusion of hyperlinks
- hyperlinks cannot be hidden through linked words/phrases.
- Could circumvent page limitations
- Applications maybe withdrawn from review for violations



### EXAMPLE



[NOT-OD-20-174](#)



<https://grants.nih.gov/grants/guide/notice-files/NOT-OD-20-174.html>

# NSF

## Proposal & Award Policies & Procedures Guide (PAPPG; NSF 22-1)

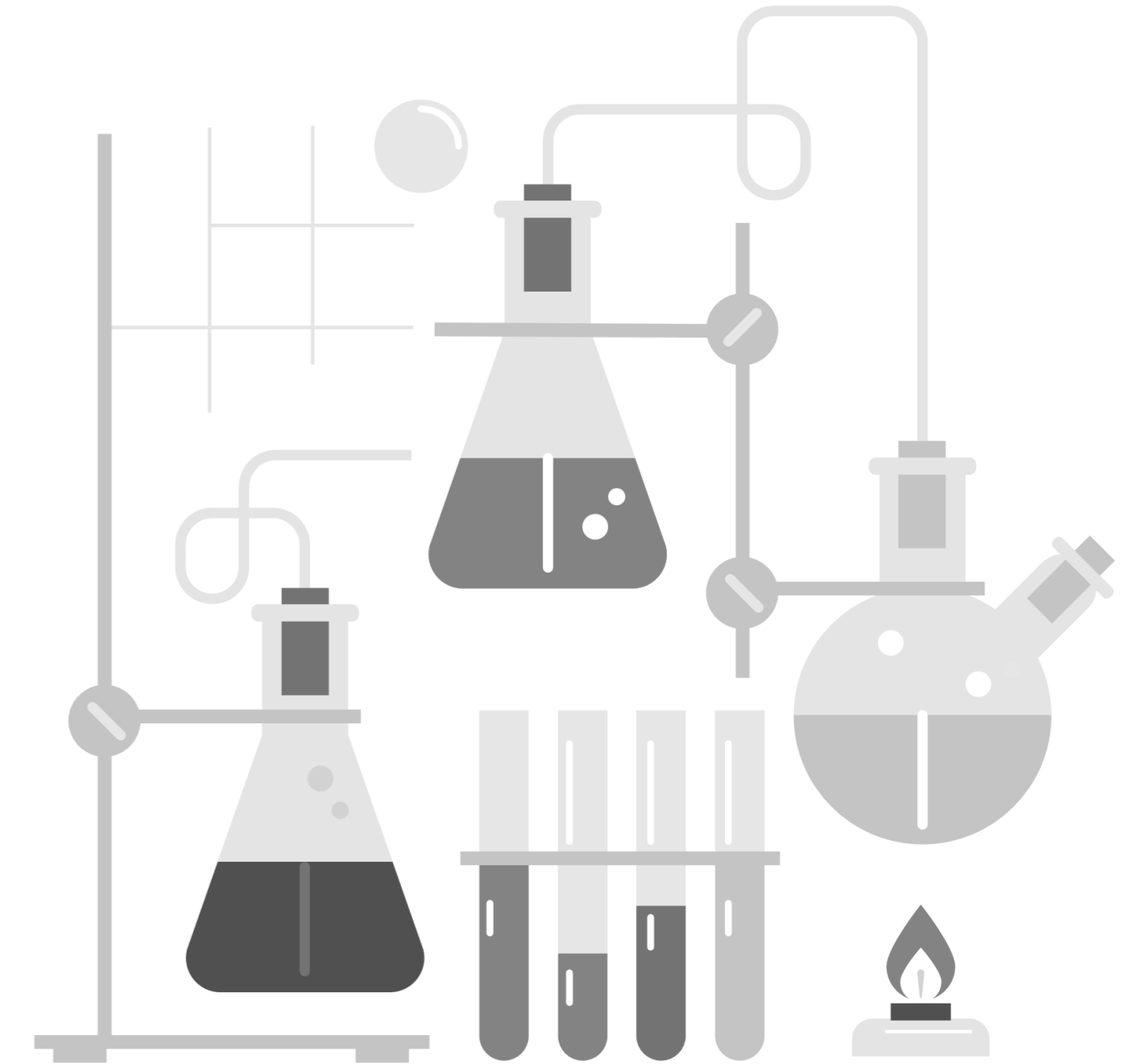
Release Date: Spring 2021

Effective: ~October 2021

- Integrating changes from 2 CFR 200 revisions & NSF policy/procedural updates
- Includes clarification on Pending & Other Support

### Research.gov

- 2022 all proposal preparation & submission
  - Demo Site available to mimic PI role available to all with Research.gov logins  
<https://web.demo.research.gov/proposalprep/#/proposal-prep>
  - RAPID, EAGER, RAISE proposals all active



## RESEARCH.GOV

Removal of Font Size and Font Type from Error Check

- Error check in line with proposals submitted under Fastlane

*“The Research.gov Proposal Submission System modernizes proposal preparation and submission capabilities by improving the user experience while also reducing administrative burden through an intuitive interface and expanded automated proposal compliance checking”*

### What is an “Error”?

Proposals cannot be submitted if Errors exist

Proposal will not progress through the review process



# NSF Proposal Error Checks

## Research.gov Error Checklist

## Fastlane Error Check

COMPLIANCE CHECK	FUNDING OPPORTUNITY TYPE	ERROR/WARNING	TYPE OF PROPOSAL			
			Research	RAPID	EAGER	RAISE
76. Proposal Duration must not exceed 2 years (24 months) for an EAGER proposal.	Program Solicitations (Some) PAPPG	Error	N/A	N/A	✓	N/A
77. Proposal Duration must not exceed 5 years (60 months) for a RAISE proposal.	Program Solicitations (Some) PAPPG	Error	N/A	N/A	N/A	✓
78. Vertebrate Animals is selected but the animal-use protocol radio button is not selected.	Program Solicitations (Some) PAPPG	Error	✓	✓	✓	✓
79. Vertebrate Animals and Approved are selected but required fields are missing: IACUC Approval Date, PHS Animal Welfare Assurance Number.	Program Solicitations (Some) PAPPG	Error	✓	✓	✓	✓
80. Human Subjects is selected but the radio button is not selected: Has the human subjects research for the project been approved by an Institutional Review Board (IRB).	Program Solicitations (Some) PAPPG	Error	✓	✓	✓	✓
81. Human Subjects and Approved are selected but the required field is missing: IRB Approval Date.	Program Solicitations (Some) PAPPG	Error	✓	✓	✓	✓
82. Human Subjects and Exempt are selected but a required field is missing: Exemption Number.	Program Solicitations (Some) PAPPG	Error	✓	✓	✓	✓
83. International Activities is selected but Country is missing.	Program Solicitations (Some) PAPPG	Error	✓	✓	✓	✓
84. Funding of an international branch campus of a U.S. institution of higher education (IHE) is selected but a country name is not selected.	Program Solicitations (Some) PAPPG	Error	✓	✓	✓	✓
85. Funding of a foreign organization is selected but a country name is not selected.	Program Solicitations (Some) PAPPG	Error	✓	✓	✓	✓
86. The International Activities checkbox must be checked on the						



# MASTER TRAINING

<https://ocga.research.ucla.edu/training-calendar/>

## FEBRUARY

### S2S Grants Basics

Wednesday, February 17, 2021

9:00am-11:30 am

This session will provide information to get new users started with the S2S Grants (Cayuse) system for preparation and submission of proposals.

Topics include: how to get access to the system, best practices, user resources, and hints and tips. This session is appropriate for individuals responsible for preparation or review of proposals in S2S Grants.

# Any Questions?

---

## Contact Information

<https://ocga.research.ucla.edu>