



# Grant Updates

---

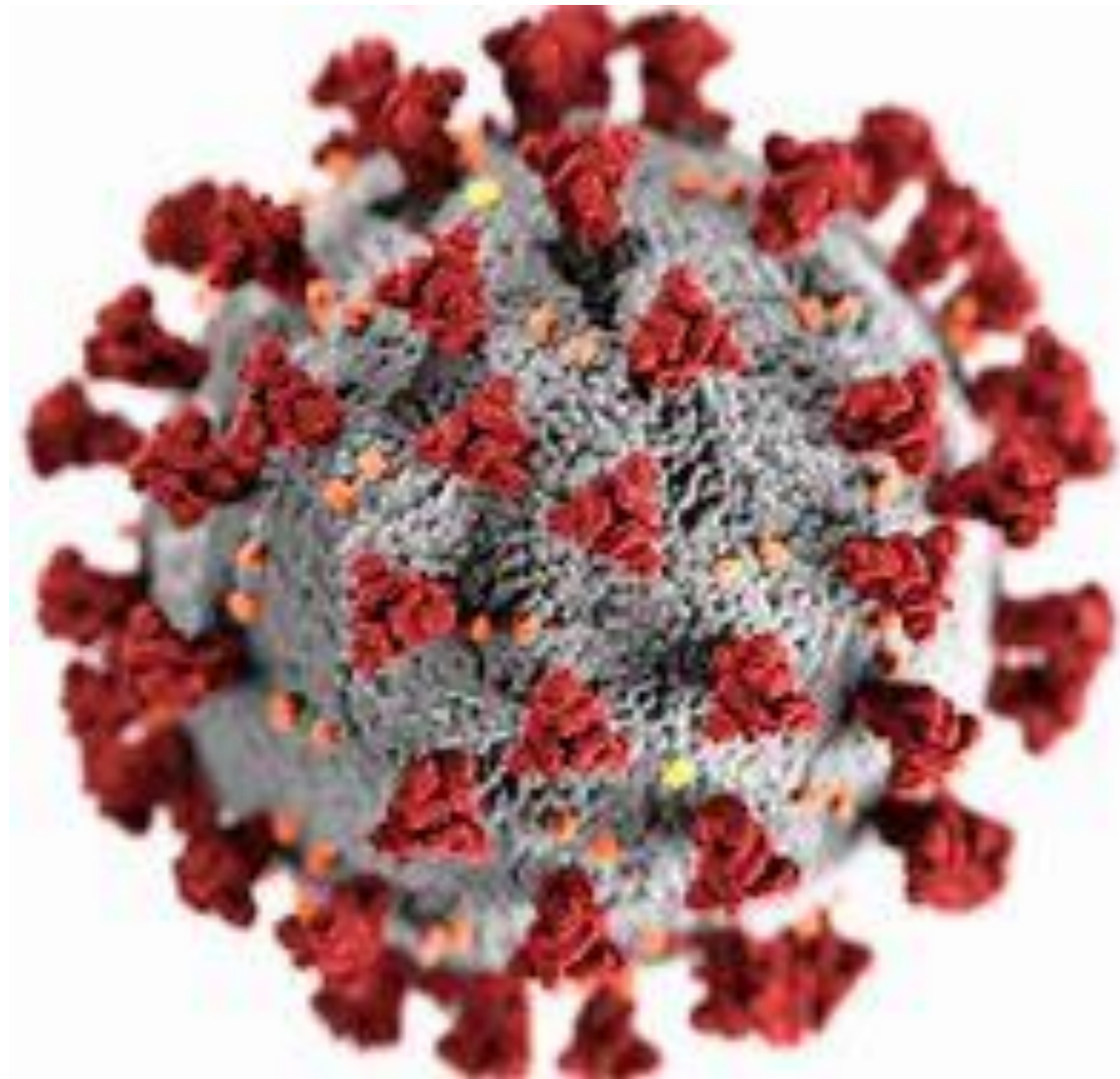
May 14, 2020

# COVID-19 Grant Considerations

**Has there been any effects on your research projects due to COVID-19?**

## Helpful Hints

- Evaluate your PI's Portfolio
- Consistent Messaging to Sponsor
  - Various Communications, Notifications, Requests
    - Ex: Progress Report, Prior Approval Request, etc.
- Future Considerations???
  - Supplemental Funding, No Cost Extension, etc.
- New Award Considerations
  - Delayed Start Date
  - Rebudget Request, Change in Personnel, Change in Scope



# COVID-19 Grant Considerations

## NIH Research Performance Progress Report (RPPR)

Home Admin Institution Profile Personal Profile Status ASSIST Prior Approval **RPPR** FFR xTrain xTrain  
Grant List **Manage RPPR** PD/PI Assurance Report  
A Cover Page B Accomplishments C Products D Participants E Impact **F Changes** G Special Reporting Req

### F.2 Actual or anticipated challenges or delays and actions or plans to resolve them

Describe challenges or delays encountered during the reporting period and actions or plans to resolve them.

Describe only significant challenges that may impede the research (e.g., accrual of patients, hiring of personnel, need for resources or research tools) and emphasize their resolution.

**Nothing to Report**

or describe challenges or delays and plans to resolve them below (NIH recommended length is up to 1 page. Limit is 8000 characters or approximately 3 pages.)

**NOTHING TO REPORT**

### F.3 Significant changes to Human Subjects, Vertebrate Animals, Biohazards, and/or Select Agents

Describe significant deviations, unexpected outcomes, or changes in approved protocols for human subjects, vertebrate animals, biohazards, and/or select agents during this reporting period.

# COVID-19 Grant Considerations

## NIH Research Performance Progress Report (RPPR)

### Other Areas for Consideration



### B) Accomplishments


 B.1.a Have the **major goals changed** since the initial competing award or previous report?  Yes  No

If yes, list the revised major goals below (NIH recommended length is up to 1 page. Limit is 8000 characters or approximately 3 pages.)

### B.6 What do you plan to do during the next reporting period to accomplish the goals?

Describe briefly what you plan to do during the next reporting period to accomplish the goals and objectives.

 Discuss efforts to ensure that the approach is scientifically rigorous and results are robust and unbiased. Remember that significant changes in objectives and scope require prior approval of the agency (e.g., NIH Grants Policy Statement, 8.1.2.).

 Include any important modifications to the original plans. Provide a scientific justification for any changes involving research with human subjects or vertebrate animals. A detailed description of such changes must be provided under Changes.

# COVID-19 Grant Considerations

## NIH Research Performance Progress Report (RPPR)

### Other Areas for Consideration



### G) Special Reporting Requirements

#### G.1 Special Notice of Award Terms and Funding Opportunity Announcement Reporting Requirements

Address any special reporting requirements specified in the award terms and conditions in the [Notice of Award \(NoA\)](#) or Funding Opportunity Announcement (FOA).

#### G.9 Foreign Component

"Foreign component" is defined as significant scientific activity that was performed outside of the United States, either by the grantee or by a researcher employed by a foreign organization, whether or not grant funds were expended. The following grant-related activities are significant and must be reported:

- involvement of human subjects or research with live vertebrate animals;
- extensive foreign travel by awardee project staff to collect data, or conduct surveys or sampling activities; or
- any awardee activity that may have an impact on U.S. foreign policy.

Examples of other award-related activities that *may* be significant are:

- collaborations with investigators at a foreign site anticipated to result in co-authorship;
- use of facilities or instrumentation at a foreign site; or
- receipt of financial support or resources from a foreign entity.

Foreign travel for consultation does not meet the definition of foreign component.

# NIH- Foreign Component

## NIH Foreign Component Definition

The performance of any significant scientific element or segment of a project outside of the United States, either by the recipient or by a researcher employed by a foreign organization, whether or not grant funds are expended. Activities that would meet this definition include, but are not limited to, (1) the involvement of human subjects or animals, (2) extensive foreign travel by recipient project staff for the purpose of data collection, surveying, sampling, and similar activities, or (3) any activity of the recipient that may have an impact on U.S. foreign policy through involvement in the affairs or environment of a foreign country. Examples of other grant-related activities that may be significant are:

- collaborations with investigators at a foreign site anticipated to result in co-authorship;
- use of facilities or instrumentation at a foreign site; or
- receipt of financial support or resources from a foreign entity.

Foreign travel for consultation is not considered a foreign component

**REMINDER:** Prior Approval is REQUIRED per [NIH Grants Policy Statement 8.1.2.10](#)

**LOCAL RESOURCES:** [UCLA Research Policy & Compliance Foreign Engagement](#)

# NIH COVID-19 General Information

## COVID-19 Information for NIH Applicants and Recipients of NIH Funding



- \$1.532 billion for NIAID
- \$103.4 million for NHLBI
- \$60 million for NIBIB
- \$36 million for NCATS
- \$30 million for the NIH Office of Director
- \$10 million for NIEHS
- \$10 million for NLM

Additional Video Links

Proposal Submission & Award Management

Human Subject & Clinical Trails

Animal Welfare

Peer Review

[Emergency Competitive Revisions \(PA-20-135\)](#)

[Urgent Competitive Revision \(PA-18-935\)](#)



[Notices of Special Interest \(NOSIs\) YouTube](#)

[NIH COVID History Update](#)

# NIH COVID-19 Grant Flexibilities

## NIH COVID-19 Frequently Asked Questions

### ^ V. Foreign Components

1. If a post-doc on an active NIH grant must return home to a foreign country and work remotely due to COVID-19, must this be reported to NIH as a foreign component?

Yes, this would qualify as a foreign component as per the NIH Grants Policy Statement Section 1.2- Definition of Terms, which defines a foreign component as *“the performance of any significant scientific element or segment of a project outside of the United States, either by the recipient or by a researcher employed by a foreign organization, whether or not grant funds are expended.”*



# NIH

### 3. Will University closings due to COVID 19 be allowed as a reason for ESI end date extensions?

**Yes**, investigators that have been affected by COVID-19 (e.g. university closure) may submit requests for an **extension of ESI status through eRA Commons** via the ESI Extension request button in the Education section of their Personal Profile. Refer to the [ESI FAQs](#) and [eRA Online Help](#) for more information on how to request an extension of ESI status.



## NIH Early Stage Investigators Status (ESI) [NOT-OD-18-235](#)

### • **Must include**

- eCommons Username
- Number of Months for Extension
- New ESI End Date
- Justification for Extension Request
- Family Care Responsibilities
- Extended Periods of Clinical Training
- Extended Periods of Additional (non-degree) Research Training
- Disability or Illness
- Active Duty Military Service
- Clinical Loan Repayment Requirements
- Natural or Other Disaster

[Information on  
Early Stage  
Investigators](#)

# NSF Coronavirus Information

## NSF COVID-19 Flexibilities

### 8. **Prior approval requirement waivers.** (2 CFR § 200.407)

#### 12. **Extension of closeout.** (2 CFR § 200.343)

NSF has automatically extended the due date for submission of all **final project reports** and **Project Outcomes Reports due between March 1 and April 30, 2020, by 30 days.** These final reports must continue to be submitted via Research.gov. Recipients are reminded that NSF cannot make any new award or supplement any existing award if the PI or any co-PI(s) has an overdue final report; therefore, it is vital that final reports be submitted by the revised due date.

NSF also has automatically extended the closeout period for awards that ended between November 30, 2019 and April 30, 2020 to 180 days.

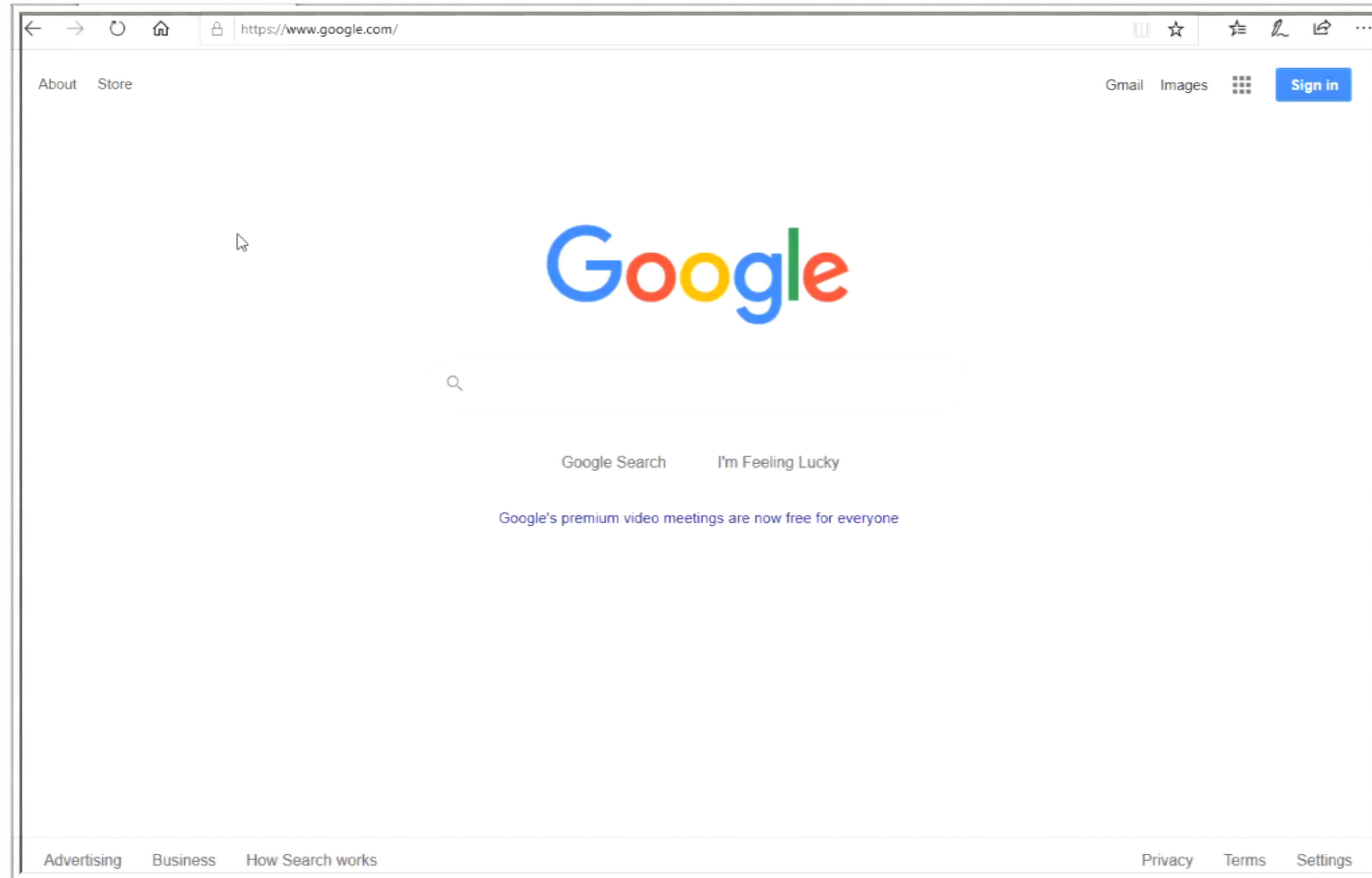
The above requests for prior approval must be submitted via Research.gov. All other prior approvals specified in the applicable Prior Approval Matrix are waived. Recipients are reminded that they are to ensure that all costs charged to NSF awards must be consistent with Federal cost policy guidelines and the terms of the award, except as specified in this guidance.



## NSF COVID-19 FAQs

## NSF COVID-19 Deadline Extensions List

# COVID-19 Grant Resources



# Non-COVID Grant Updates

## American Heart Association (AHA)

- Proposal submission will transition to Proposal Central  
[AHA Application Information](#)

## National Cancer Institute (NCI)

- Proposal Revised Minimum Levels of Effort  
[NOT-CA-20-047](#)

Mechanism	Role	Minimum Level of Effort in person months/year (%)
R01/U01	Single PI	1.8 months (15%)
	Multi-PI	1.2 months (10%) each
P01 <sup>1</sup>	Single PI	1.2 months (10%) <sup>2</sup>
	Multi-PI	0.96 months (8%) each
	Project PI	1.8 months (15%)
	Core Leader	0.6 months (5%) <sup>3</sup>
R21	Single or Multi-PI	0.6 months (5%) each

## Electronic Systems Challenges

- Cayuse
- NIH eCommons
- Grants.gov



# ORIGINAL DOCUMENTS

## Original, Signed (wet ink signature) Documents

### Examples:

State of California – California Fair Political Practices Commission

- **700U**

National Institutes of Health (NIH)

- **Activation Form**
- **Payback Agreement**



# THANK YOU !!!



# Any Questions?

<http://ocga.research.ucla.edu>